



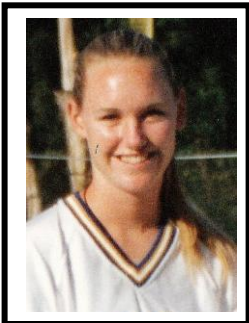
Arizona Softball Foundation Diamond Highlights

June 2012

Summer

Volume17

Welcome 2012 Hall of Fame Inductees



B'Ann (Burns) Jacobs

B'Ann Burns Jacobs lead her Greenway High School Team to two state championships. She also played ASA ball with the Naturals, Lil Saints, and Gordon Panthers. She won National Championships playing for the Lil Saints and 18 Gold Gordon Panthers. Following high graduation, she went to UCLA on a four year scholarship. B'Ann finished

her career in the professional league playing for the Italian Peanuts and Tampa Bay FireStix Teams.

Dee Everhart will be inducted as a player. Dee was a five time PCWSL All Star center fielder, and played in The Pacific Coast League with the PBSW Ramblers and Sun City Saints. While on the Saints she helped lead them to four Cactus Regional Championships. Throughout her career she participated in seven National Tournaments. In 1967 Dee was awarded the coveted Kay Roher Memorial Award for her outstanding play.



Dee Everhart

Sandy Peterson was a pitcher and outfielder. Her 21 year career started at age 13 playing for the Prescott Nuggets. After graduating from Prescott High, she moved to the valley and started playing for the Paint Pot Dudettes, Phoenix PBS Ramblers, and the Mercury



Sandy Peterson

Blues. While she played for the Dudettes, they won the Copper State League and she was selected to the Copper State All Star Team

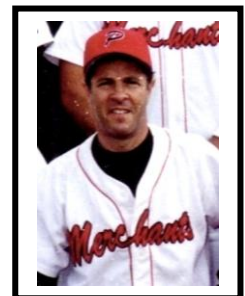


Erica Beach

Erica Beach started her career on the 12U Storm team winning her first national championship. At Chaparral high she pitched her team to four consecutive state titles. Erica went on to ASU and lead the devils to the College World Series where she was selected

to the All Tourney Team. Erica was a member of the 2000, and 2001 ASA Women's National Champion Phoenix Storm Teams. She played professionally on the Netherlands Sparks Haarlem, Arizona Heat, and New England Riptide teams. She is currently the Head Coach at the University of New Mexico.

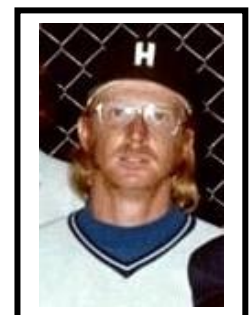
Paul Rubin started his career in 1975 playing for a church team in Tucson. He quickly moved on to the Jack Ellis Sporting Goods team playing in the strong Arizona State Travel League. Paul played outfield and was a five time Arizona All State Selection as well as a ASA Major All American in 1989. Paul is currently a player-coach for the U.S. Maccabiah (Jewish)



Paul Rubin

team. He is also a player coach for the, Prescott Patriots, one of the best 50 and over teams the country.

John Guthrie played on many top Arizona Teams over a nineteen year career including Hays Roofing, and the nationally known Turquoise Kings. He was a first baseman and outfielder. John attended five ISC World Tournaments. Early in his career he was drafted by the San Francisco Giants.



John Guthrie



ASF Scholarships Recipients

ASF has awarded two scholarships this year. An individual Scholarship was awarded to Marissa Jauregui a freshman from Bagdad High School to attend Paradise Valley Community College. The second scholarship is going to Jacqueline Aguilar from Bourgade Catholic High School to attend Mesa Community College.



ASF Tenth Annual Golf Tournament at Aguila Golf Course

This past May 5th the Arizona Softball Foundation held their tenth annual Golf Tournament at Aguila Golf Course. Everybody enjoyed a wonderful day of golf. Over \$1400 dollars was earned for our scholarship fund.



*Mixed Championship Team
Ed Warnke, Nancy Funari,
Rich Funari, & Joe Chavez*



*Women's Championship Team
Mary Josephson, Barb Fagrell,
Sue Beyer, Karen Mischlispy*



*Men's Championship Team Julian
De La Cruz, Joe Butkiewidz, Rick
Acton , & Michael de la Cruz*

Contest Hole Winners: Closest to the Pin: Junella Stone, & Dan Fletcher Longest Drive: Jackie Smith & Brandon Baldenegro



Second Annual ASF Hall of Fame Golf Tournament



ASU Karsten Golf Course
Sat., Sept. 22, 2012
7:30 AM Shot Gun

Golf Entry Form Available on the ASF Web Site:
arizonasoftballfoundation.org

It's that time of year again. Pull out your golf clubs and join us at Karsten golf course for the Second annual ASF Hall of Fame Golf Tournament. Check in will begin 6:30 AM with a 7:30 AM shot gun start.

Cost: \$70.00 a player or \$280.00 per team.

Three Divisions: Women, Men and Mixed will be offered. Special contest holes will include Closest to the Pin and longest drive for both men and women. Golfers have the chance to improve their scores by purchasing mulligans and string. Tournament format is a four person scramble.

Tee Promotions are needed:

If your business is interested please contact Karen Mischlispy at (602-438-2928) or Ed Fletcher at (480-831-6924 evenings only).

Tee Sponsorships: Start at \$50 & Up
Send Entries to:

Karen Mischlispy
3818 E. Saint Catherine Ave.
Phoenix, Arizona 85042
602-438-2928

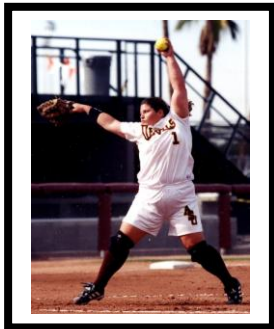
Deadline for Entries:

September 14th, 2012

Proceeds go to the ASF Softball Hall of Fame located in Prescott.



Welcome to the Induction Banquet



Erica Beach

This year's induction banquet will again be held at the **Phoenix Sheraton Crescent Hotel** on August 4, 2012. Registration and a **No Host Reception /Reunion** will be from 5:00 PM until 6:00 PM. Visit the memorabilia tables showcasing the lives of our inductees. Dinner will be served at 6:00 PM with the induction program to follow.

Tickets for this year's banquet will be \$40.00. Please contact Bobbi Forner at 602-266-7125 for ticket information, or write to Bobbie and mail to:

(ASF) Bobbi Forner
6336 North 11th St.
Phoenix, AZ. 85014

Deadline for tickets is July 20th

Special room rate at the Phoenix Sheraton Crescent is \$79.00 + tax per night.

There will be a **Silent Auction** and a **50-50 Raffle** prior to the induction ceremony.

ASF is honoring a reunion of the following two teams tonight:
12U ASA Phoenix Storm National Champion Team and
ASA 14U Naturals club teams.

**COME JOIN YOUR FELLOW
SOFTBALL FRIENDS FOR A NIGHT
OF FUN AND ENTERTAINMENT.**

The Phoenix Sheraton Crescent

2620 West Dunlap Ave.

(I-17 & Dunlap)

Phoenix 85021

Reservations: On line at

WWW.sheratoncrescent.com

\$79.00 + Tax for a room

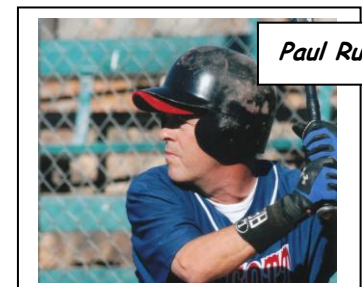
Check the hotel email for possible special rates just before the banquet:



John Guthrie



B'Ann Burns



Paul Rubin

Arizona Softball Foundation Web Page: arizonasoftballfoundation.org
Visit Arizona Softball Foundation on our Facebook page: [arizonasoftballfoundation](https://www.facebook.com/arizonasoftballfoundation)

Membership Information

Annual dues: \$20.00
 3-Year Member: \$50.00
 Life Time Member 150.00

Please Print:

Name: _____
 First Last

Mailing Address

 City State Zip

E-mail (optional) _____

Phone: (Day) _____

(Evenings) _____

Cell _____

include area code for each

Send To: ASF - Rita Stilwell
 19741 West Colter Street
 Litchfield Park, Arizona 85340
 Phone: 623-853-1012

Make Checks Payable to: Arizona Softball Foundation

2012 ASF Board of Directors

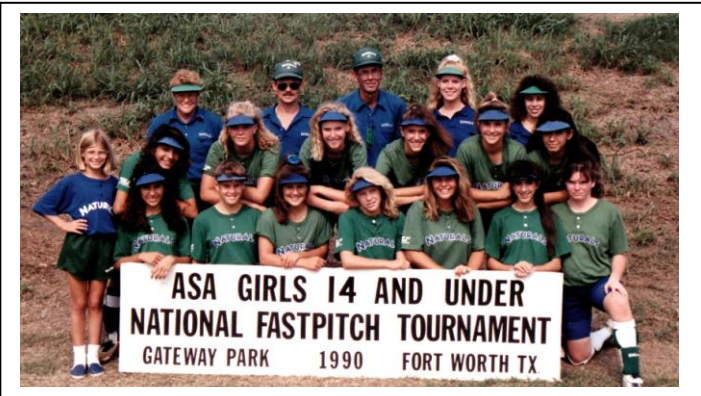
President	John White
Vice-President	Karen Mischlispy
Men's Chair	John White (Acting)
Women's Chair	Joanna Burton
Member at Large	Nancy Funari
Member at Large	Dennis Stilwell
Treasurer	John White (Acting)
Secretary	Vacant
Golf Chair	Ed Fletcher
Banquet Co-Chairs	Joanna Burton Nancy Funari Karen Mischlispy Bobbi Forner Rita Stilwell
Membership Chair	
Important!!!	
Please contact Karen Mischlispy at 602-438-2928 if you are interested in serving on the ASF Board.	

ASF is honored to host the reunion of these two youth teams.

Welcome the 1992
 ASA 12U Storm National Champions



Welcome 1990
 ASA 14U Naturals Team



Join Us At The Banquet
 Join Us At The Banquet

