



Arizona Softball Foundation Diamond Highlights

January 2011

Spring

Volume15

2010 Hall of Fame Banquet Inductees



2010 Hall of Fame Inductees: Dennis Stilwell, Linda Wells, Del Stilwell, Becky Rice, Bo Hall, and Marie Rodgers Brandenburg



Karen Mischlispy presents Joe Lane his plaque

Saturday, August 14 the Arizona Softball Foundation held its annual Induction banquet at the Sheraton Crescent Hotel in Phoenix honoring the class of 2010. Over one hundred and fifty guests attended this year's celebration. The 2010 Induction banquet marked the tenth anniversary of the Class of 2000. The members of the class of 2000 were recognized in a special slide presentation during the banquet.

Joe Lane received a plaque from the ASF recognizing him for his many years of service as the Maricopa County ASA commissioner and for his efforts in establishing the ASA Scholarship fund presented by the Arizona Softball Foundation.

The ASF and Maricopa ASA Softball awarded scholarships to four players from the Gateway and Glendale Community Colleges Softball Programs.



ASF Calendar of Events

Monthly Board Meetings--2nd Wed. of month 6pm at Hamburger Works 15th Ave & Thomas Rd
Deadline for Hall of Fame Nominations April 29th.

New Hall of Fame Golf Tourney-Sunday June 5th, 7AM Shot Gun at Karsten Golf Course

Hall of Fame Induction Banquet-Saturday, Aug. 13th at 5pm Location TBA.

11th Annual ASF Golf Tournament at Aguila Golf Course, Saturday, Sept. 17th, 7:30 am Shot Gun

Sponsorships needed for all events listed above-Contact Karen Mischlispy 602-438-2928

ASF Scholarships Recipients



Coach Jamie Long from Gateway Community and players Lauren Irwin and Marina Casas receive their scholarship certificates from Karen Mischlispy

ASF Web Site Ready www.arizonasoftballfoundation.org

The ASF web site is now officially open. Special Thanks to Emily Alexander our webmaster. Arizona has a long, varied and proud history in fastpitch softball. The web site celebrates that history-from the pioneers who put Arizona firmly on the softball map to our current day stars playing on the world stage of softball.

At the site one can find information on the history of ASF, Arizona Hall of Fame Members with Bios and pictures, Scholarship information and a list of past recipients, copies of current and past newsletters, and hundreds and hundreds of pictures of players, teams, and contributors.
Come in. Browse. Enjoy.

Reminders!!!!

Memberships for 2011 are due. Membership form on page 4. 1 Year, 3 year or lifetime memberships available. Return dues to membership chair: Rita Stilwell

New Nominations
If you want to nominate a female player or contributor for the Hall of Fame, Contact **Joanna Burton** at **623-979-6823**. For men nominees Contact **John White** at **520-836-6096** by **April 29th**.

Scholarship Applications
Interested individuals or Community College Coaches contact **Karen Mischlispy** at **602-438-2928** by **April 29th**. Scholarships



ASF Fall Golf Tournament Hosted at Encanto Golf Course



This year's tournament was held at Encanto Golf Course. We had 41 enthusiastic golfers. John Fletcher posted a **hole in one** for the men's closest to the pin contest. Thanks to everyone contributing by buying string, mulligan, raffle tickets, Vegas hole, and special refreshments. We cleared about \$1,400.00 for the hall of fame and scholarship program.

Tournament Results:

Men's Division First Place

- Paul Fletcher
- Dan Fletcher
- Eddie Baldnegro
- Tim Sexton

Men's Division Second Place

- Rich Funari
- Nancy Funari
- Joe Chavez
- Ed Warnke

Men's Closest to the Pin

- John Fletcher

Men's Longest Drive

- Paul Fletcher

Women's Division First Place

- Becky Rice
- Pat Heichel
- Jody Reichow
- Sue Wilson

Women's Division Second Place

- Patty Contreras
- Sue Beyer
- Kelly Stevens
- Karen Mischlispy

Women's Closest to the Pin

- Becky Rice

Longest Drive

- Pat Heichel



John Fletcher pointing to his hole in one for the Closest to the pin contest.



Longest Drive Winners: Ed Fletcher and Pat Heichel



Men's First Place Team
Tim Sexton, Eddie Baldnegro, Paul Fletcher, & Dan Fletcher



Women's First Place Team
Pat Heichel, Becky Rice, Sue Wilson, & Jody Reichow



Closest to the Pin
Ed Fletcher & Becky Rice

Membership Information

Annual dues: \$20.00

3-Year Member: \$50.00

Life Time Member 150.00

Please Print:

Name: _____
 First Last

Mailing Address

City State Zip

E-mail (optional) _____

Phone: (Day) _____

(Evenings) _____

Cell _____

include area code for each

Send To: ASF - Rita Stilwell
 19741 West Colter Street
 Litchfield Park, Arizona 85340
 Phone: 623-853-1012

Make Checks Payable to: Arizona Softball Foundation

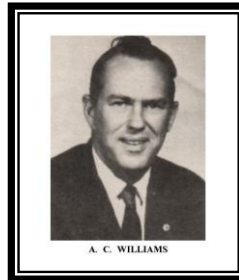
2009 ASF Board of Directors

President	John White
Vice-President	Karen Mischlispy
Men's Chair	John White (Acting)
Women's Chair	Joanna Burton
Member at Large	Nancy Funari
Member at Large	Dennis Stilwell
Member at Large	Bob Swan
Treasurer	John White (Acting)
Secretary	Vacant
Golf Chair	Ed Fletcher
Banquet Co-Chairs	Joanna Burton
	Nancy Funari
	Karen Mischlispy
	Bobbi Forner
	Rita Stilwell

Membership Chair
 Important!!!

Please contact Karen Mischlispy at
 602-438-2928 if you are interested in serving
 on the ASF Board.

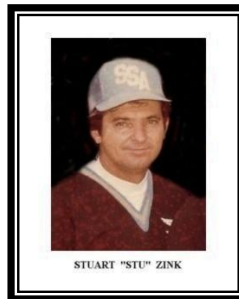
In Memoriam



A. C. WILLIAMS

AC Williams

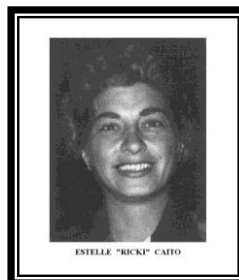
AC Williams passed away on August 31, 2010. He was inducted into the Arizona Softball Foundation Hall of Fame in 1976. He served as ASA Softball State and Rocky Mountain Region Commissioner for many years starting in 1970. In the 70's AC took Arizona Softball Teams to play in New Zealand, South Africa, Netherlands, Antilles, Puerto Rico, Australia and the Philippines. AC was inducted into the ASA National Hall of Fame in 2004.



STUART "STU" ZINK

Stu Zink

Stu Zink Passed away on September 11, 2010. He was inducted into the Arizona Softball Foundation Hall of Fame in 2000 and in the International Softball Congress National Hall of Fame in 1980. Stu was a player and manager of National Champion Schaefer-Smith Men's fast pitch team.



ESTELLE "RICKI" CAITO

Ricki Caito

Ricki Caito passed away January 9, 2011. She was inducted into the Arizona Softball Foundation Hall of Fame in 1978 and the National ASA Softball Hall of Fame in 1973. Ricki played for the Orange Lionettes and PBSW Ramblers. She played in ten ASA Nationals and was selected an All-American five times

